



ST 1384 D

Our largest semi-professional snow-thrower.

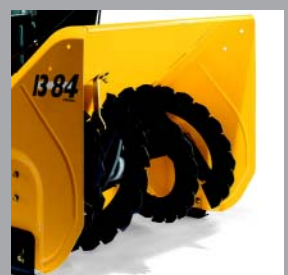
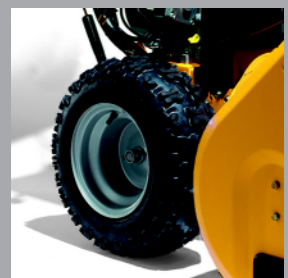
The snow-thrower easily works through very hard and icy snow-drifts. Equipped with a powerful dual-stage system. The snow is first collected with a saw-toothed spiral and then practically ejected about 12 metres with a fan.

The machine is designed for users with high demands. The machine has electric start, integrated halogen light, differential and fuel gauge. Direction and height of ejector is quickly adjusted from the handle. The comfortable handle can be operated with one hand only. Snow chains are available as accessory.

Equipped with a low-vibrating 13,0 hp engine. The powerful engine has an extremely high torque. Working width 84 cm.

CHASSE-NEIGE

ST 1384 D



STIGA®

www.stiga.com

ST 1384 D (18-2862-26)

MOTEUR

Marque	Briggs& Stratton Intek OHV
Puissance	13 hp/9,6 kW
Cylindres	1

CARBURANT

Type de carburant	Unleaded
Capacité du réservoir	3,8 l
Jauge à carburant	Yes

TRANSMISSION

Type de transmission	Friction disc
Blocage de différentiel	Differential on driving axle
Nombre de rapports	6 forward, 2 reverse

ROUES

Type de roues	Maxi-grip tyres
Dimension de roues	40 x 17 cm
Roulements	Ball bearings
Chaînes de roues	Accessory

VIBRATIONS & NIVEAU DE BRUIT

Niveau de puissance acoustique	108 dB(A)
Vibrations	10,5 m/s ²

COMMANDES

Démarrage électrique	Yes, 230 V
Phare	Integrated halogen light
Guidon	Yes
Starter	Manual
Type de contacteur	Plastic key
Levier d'accélérateur	Yes, on engine
Goulotte orientable	Horizontal and vertical controlled from handlebar

COULEUR & MATIÈRE

Couleur du châssis	Yellow
Matériau du châssis	Metal

DIMENSIONS & POIDS

Poids net	134 kg
Type d'emballage	Wooden frame, board on sides
Largeur de travail	84 cm
Diamètre de branche	61 cm
Diamètre de la fraise	40 cm
Diamètre de la turbine	30 cm

AUTRES INFORMATIONS

	Yes
Instructions for use	8218-2217-03
EAN bar code	7313321800482
Autres informations	Tool box with shear bolts